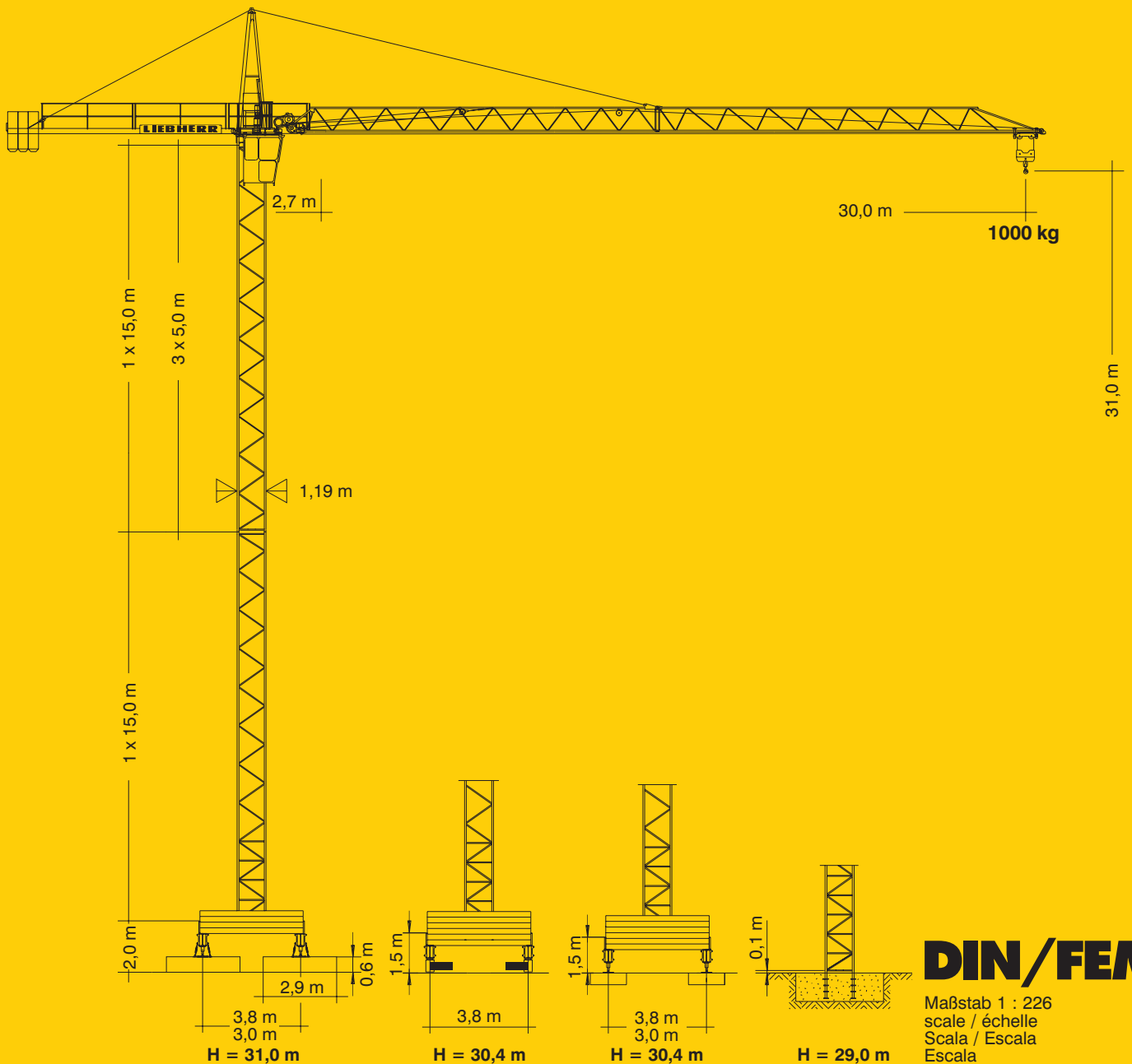


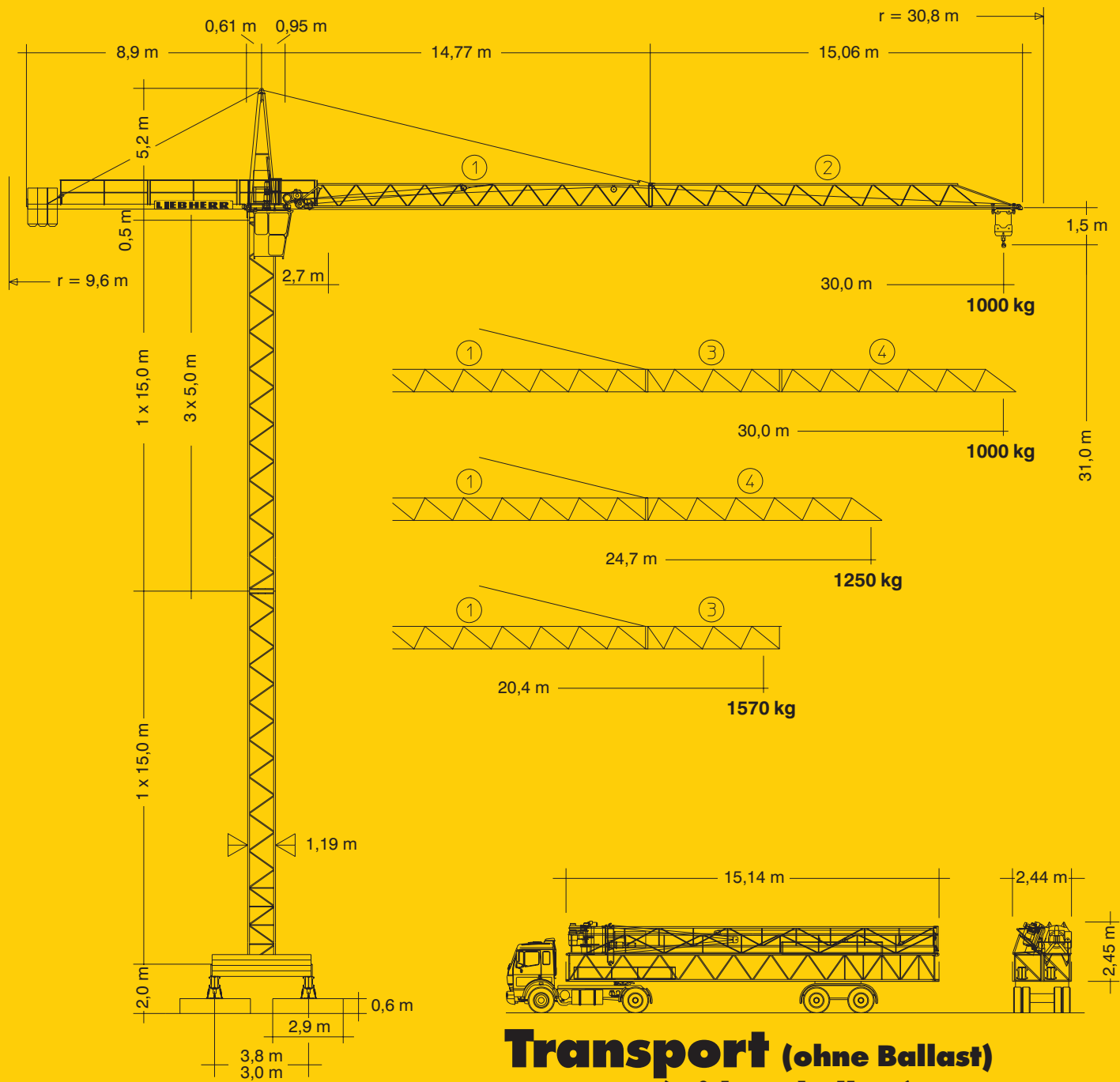
Tower Crane
Grue à tour / Gru a torre
Guindaste de torre / Grúa torre

Turmdrehkran 30 LC



CD-1

LIEBHERR



Transport (ohne Ballast)
Transport (without ballast)
Transport (sans lest)
Transporto (senza zavorra)
Transporte (sin lastro)
Transporte (sin lastre)

Gewicht

Weight / Poids / Peso / Peso / Peso

Fundamentblöcke Foundation blocks Blocs de fondation Blocchi di fondazione Blocos de fundação Bloques de apoyo	10.000 kg	Zentralballast Central ballast Lest de base Zavorra centrale Lastro central Lastre central	<input type="checkbox"/> 3,8 m	<input type="checkbox"/> 3,0 m	Gegengewicht (Ausl. 30 m) Counter weight Contre-poids Contrappeso Contra peso Contrapeso	3.900 kg
			<input checked="" type="checkbox"/> 20.000 kg	30.000 kg		
			<input checked="" type="checkbox"/> 25.000 kg	35.000 kg		
Konstruktionsgewicht ca. / Dead weight approx. Poids de la construction env. / Peso della costruzione circa Peso da construção aprox. / Peso de construcción aprox.						10.900 kg











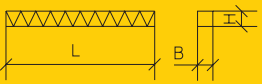



30 LC

Kolli-Liste

Packing List / Liste de colisage / Lista dei colli

Lista de embalagem / Lista de dimensiones y pesos

Montagegewichte: siehe Betriebsanweisung.
Erection weights: see instruction manual.
Poids de montage: voir manuel de service.
Pesi di montaggio: vedasi le istruzioni sull'uso.
Pesos de montagem: vejã-se es instruções p. uso.
Peso para el montaje: según manual.

Pos. Item Rep Voce Ref Pos.	Anz. Qty. Qté. Qta. Quant. Cant.			L (m)	B (m)	H (m)	kg	Einzelgewichte / Single weights / Poids individuels. / Pesi di componenti. / Pesos de peças componentes. / Pesos unitarios.
1	1	Kabine + Steuerstand Cabin + Seat Cabine + fauteuil Cabina + poltrona Cabine + cadeira Cabina + butaca		1,87	1,12	2,18	440	
2	1	Turmspitze mit Kud-Auflage Tower head section with slewing ring support Porte-flèche avec pivot Testa porta-braccio Cabeça de apoio de lança Cabeza de torre		5,76	1,37	1,80	1450	
3	1	Gegenausleger Counter-jib Contre-flèche Contrabaccio Contra-lança Contrapluma		8,98	0,76	0,63	870	
4	1	Ausleger-Anlenkstück Jib section Pied de flèche Settore articolato di braccio Base articulada de lança Tramo primero de pluma		15,06	1,48	1,43	① 1710	
5	1	Ausleger-Zwischenstück Intermediate jib section Elément intern. de flèche Spezzone di braccio Peça suplementar da lança Tramo intermedio de pluma		5,41	0,86	1,00	③ 215	
6	1	Ausleger-Kopfstück Jib head Pointe de flèche Punta freccia Cabeça de lança Tramo punta de pluma		15,01 9,71	0,86 0,86	1,00 1,00	② 520 ④ 340	
7	1	Podeste Platforms Plates-formes Plattaforma Plataforma Plataforma		1,75 1,80	1,33 0,33	0,75 1,60	50 155	
8	1	Turmstück oben Tower section upper Element de mât, supérieur Elemento di torre superiore Torre superior Torre superior		15,10 5,10	1,14 1,14	1,14 1,14	1610 570	
9	1	Turmstück unten Tower section lower Element de mât, inférieur Elemento di torre inferiore Torre inferior Torre inferior		15,12	1,19	1,19	1640	
10	1	Unterwagen-Rahmen Undercarriage frame Cadre de châssis Intelaiatura carro Estrota de carrinho Bastidor carretón		4,15 3,35	0,65 0,65	1,35 1,35	1640 1390	
11	2	Tragholm Arm Longeron Longherone Travessa Braço		4,10 3,30	0,46 0,46	0,49 0,49	685 512	
12	4	Abstützung Support Appui Sostegni Apoios Apoyos		0,42	0,40	0,40	44	
13	-	Seile und Kleinteile Small parts and ropes Accessoire et câbles Accesori cavi Accesórios e cabos Accesorios y cables		-	-	-	210	

Datenblatt Nr. 120 P – 3464 H1 B3 DIN 15018 • BGL 2112-0028 / FEM (Section 1) Krangruppe A3 • 04.95

Data sheet / Feuille de caractéristiques

Foglio caratteristiche tecniche

Folha de características técnicas / Hoja de características

Konstruktionsänderungen vorbehalten! / Subject to alterations!
Sous réserves de modifications! / Si fa riserva di modifiche!
Salvo modificação da construação! / ¡Sujeto a modificaciones!

Printed in Germany.



Nehmen Sie Kontakt auf mit

Please contact

Mettez-vous en rapport avec

LIEBHERR-WERK BIBERACH GMBH, Postfach 1663, D-88396 Biberach an der Riß

☎ (0 73 51) 41-0, Fax (0 73 51) 4 12 25, <http://www.Liebherr.com>, E-Mail: info@lbc.liebherr.com